

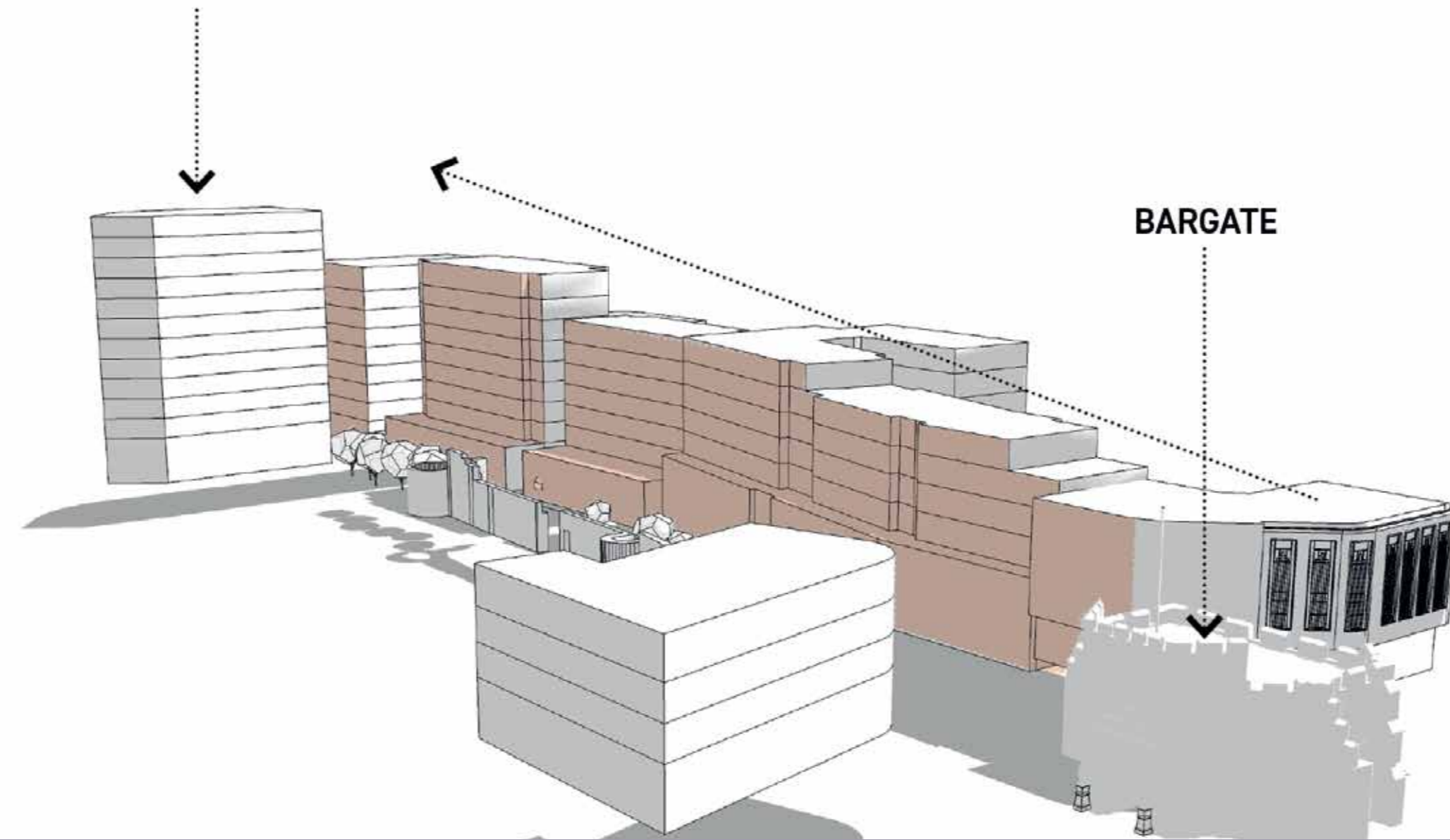
Our new vision for the Bargate Quarter

What is changing

To ensure the scheme is sustainable and deliverable, Tellon has amended the proposals with the following changes:

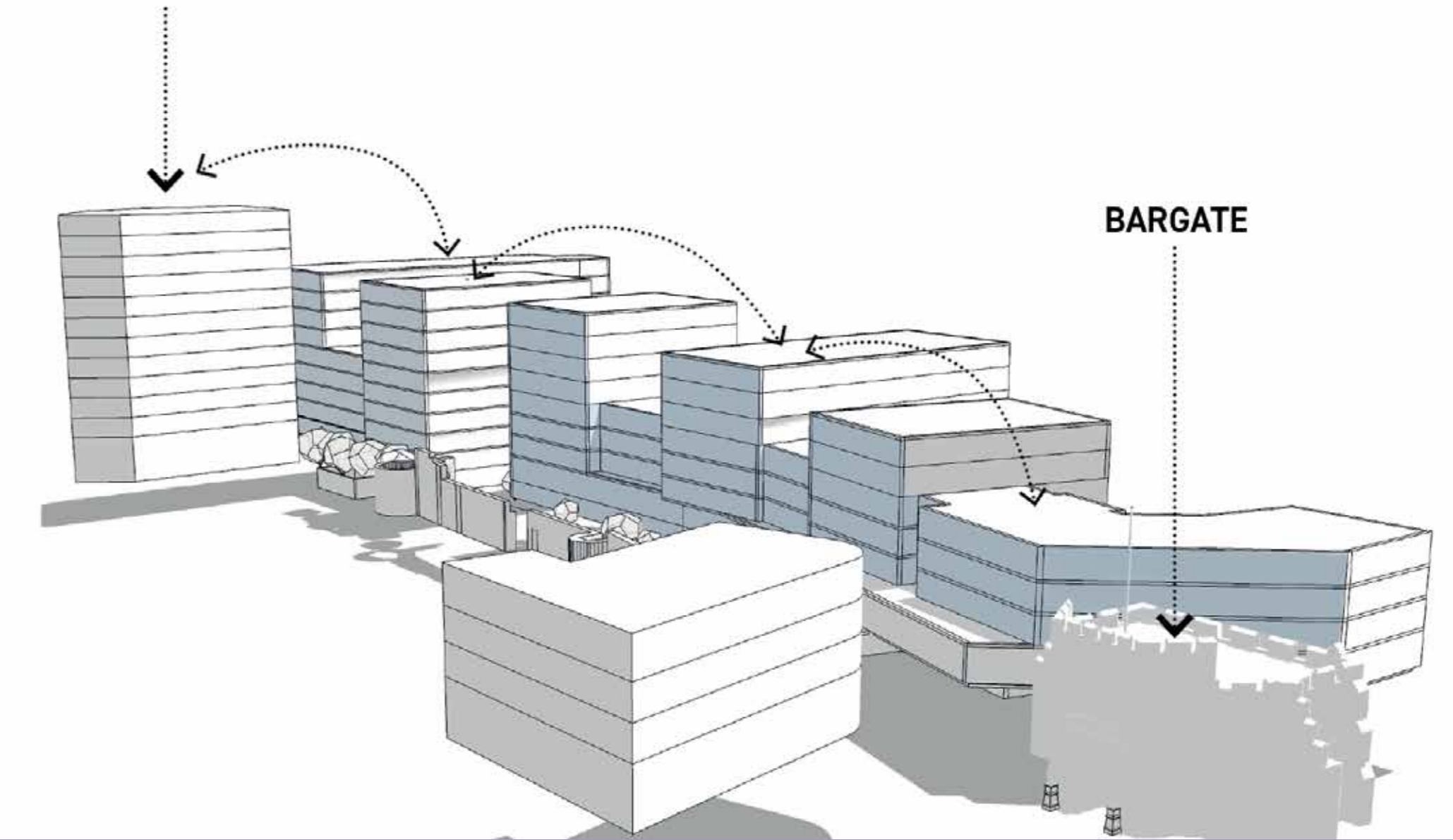
- Approximately 500 residential units (287 previously proposed)
- Approximately 2,515 square metres of retail (7,343 square metres previously proposed)
- Hotel plans withdrawn in favour of new homes for local people

PROPOSED SITE E
(LANDMARK BUILDING)



The current scheme which already has planning approval

PROPOSED SITE E
(LANDMARK BUILDING)



The newly amended and updated plans



The Bargate Quarter viewed from the west of the site



The Bargate Quarter scheme will seek to make much more of Southampton's historic City Walls and deliver high-quality public open spaces



The footprint of the consented scheme along with the new vision



The Bargate Quarter viewed from the east of the site